

Everyone is able (coming late fall, 2013) New

This workshop introduces members to a new resource called Everyone Is Able, which consists of a DVD and guidebook. The 30-minute DVD is a documentary style film that has been designed to use as an educational tool with both members and students. The workshop explores various ways to use this DVD as a professional development opportunity for staff to uncover their own assumptions/myths/stereotypes and increase sensitivity and awareness of issues around abilities/disabilities. The guidebook is a curriculum resource to use with students to help them develop an understanding and appreciation for the diversity in our schools.

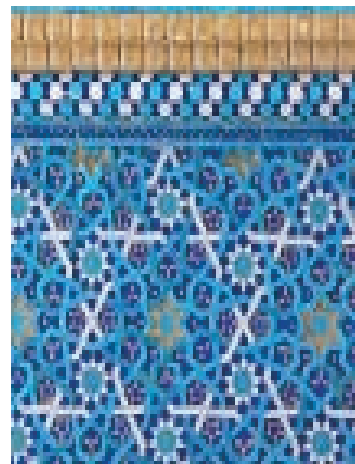


Welcoming and Supporting Lesbian, Gay, Bisexual, and Transgender Families New (coming late fall, 2013)

Research shows students perform better academically and socially when they see themselves reflected in the school environment and curriculum. How do we do this specifically for LGBT families, the fastest growing type of family structure in Canada? This workshop is built from a practical, “use-it-now” perspective. Participants will discuss ways to foster positive communication and trust with LGBT families, use of inclusive language, making curriculum connections, and how to honour LGBT families around celebrations and traditions (e.g. Family Day, Mothers’ and Fathers’ Day). Plenty of hands-on resources will be made available to participants.

Addressing Islamophobia: A Discussion for Educators

Islamophobia is prejudice against, hatred, or fear of Islam or Muslims. This workshop is to build awareness relating to issues of Islamophobia and critically examine personal and professional biases, explore resources to meet the diverse needs of schools, representing a multiplicity of perspectives, and to encourage members to take further actions relating to inclusion within their classrooms, schools, families, and communities.



LGBT Awareness in Primary Classrooms

This workshop raises awareness that even our youngest students may confront issues of homophobia and heterosexism, in relation to their families and peers as well as to their own gender identities. The workshop is designed to assist educators explore these issues and find the courage and understanding to include all children and families in our schools and the global community.



Les racines de l'égalité

Une ressource offrant des plans de leçons pour appuyer le personnel enseignant de la maternelle à la 8^e année dans leurs classes de français programme de base, de français intensif ou d'immersion française. Fondée sur l'égalité, ainsi que sur la prise de conscience de la violence contre les femmes, elle utilise des approches et des média divers pour favoriser des rapports sains et égaux avec la famille, les amis et le milieu scolaire, ainsi que tous les membres de la communauté.

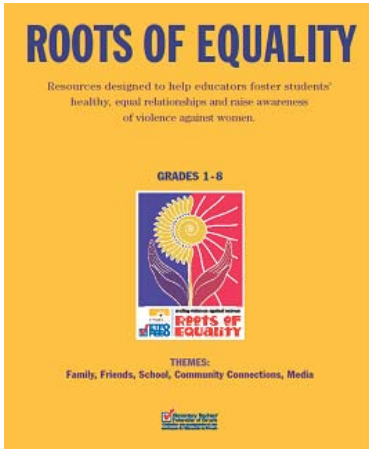
Social Justice Begins with Me

This workshop introduces members to the Social Justice Begins with Me resource kit, designed to help teachers address issues of equity and social justice in their classroom and assist students in developing awareness and understanding of these issues. Lesson plans for K to grade 8 are linked to Ontario's curriculum. The workshop will show teachers how to engage diverse learners and create classroom environments that are safe and inclusive.



Equity 101

This workshop is meant to introduce members and locals to some fundamental ideas and to the legal context of equity work.



Roots of Equality **Gr.1-8**

This workshop introduces members to the Roots of Equality resource, designed to help foster students' healthy, equal relationships, and raise awareness of violence against women. Lesson plans for grades 1 – 8 (themes: Family, Friends, School, Community Connections, Media) are linked to Ontario's curriculum. Also available are workshops for grade 7 & 8 girls and tip sheets for parents (in eight languages) and educators (English and French).

Learning and Understanding: Cultural and Religious Differences

This workshop explores the cultural and religious practices related to world religions that teachers must understand in order to provide a safe learning environment for all students. The workshop will highlight the key components of world religions as well as work to dispel myths, stereotypes, and prejudices that are related to cultural and religious differences. Curriculum materials for grades 1 – 8 are provided.



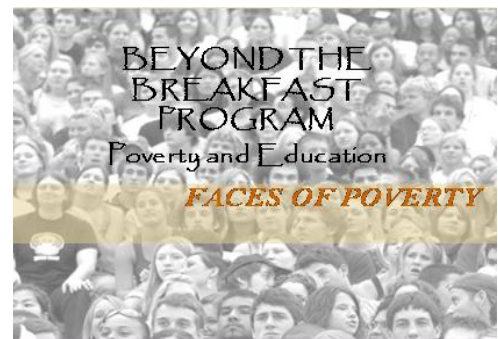
Woman Abuse Affects Our Children

Woman Abuse Affects Our Children

This workshop explores the effects of woman abuse on children and how educators can help.

Beyond the Breakfast Program

This workshop explores the stigma of being poor, issues connected to family poverty, self-esteem, literacy problems, and what steps teachers can take to make a difference in their schools/classrooms. Curriculum materials for grades 1 – 8 are provided.





Planning Sheet for Equity and Women's Services
2013-2014 Workshop

TITLE OF WORKSHOP: _____

LOCAL: _____

Teacher OT ESP PSP DECE

CONTACT INFORMATION: _____

Name ETFO Member #

Address City/Province Postal Code

Home Phone Number School Phone Number

Fax Number E-mail Address

WORKSHOP SPONSOR (i.e., Local, Committee, School(s), etc.): _____

WORKSHOP LOCATION (Be sure to include detailed directions or a map): _____

DATE OF WORKSHOP: _____

BEGINNING & ENDING TIMES: _____

NUMBER OF PARTICIPANTS: _____

LOCAL PAYS COST FOR BOOKS (min. 15): _____

TOTAL COST: _____

ADDITIONAL INFORMATION/ COMMENTS: _____

Please fax this completed form to ETFO Equity and Women's Services, attention to Carol Zavitz at 416-642-2424.

FUNDS AVAILABLE TO LOCALS FOR WORKSHOPS

EQUITY WORKSHOP INCENTIVE FUNDING

A maximum of \$300 per local. It is available for 20 locals to encourage equity workshop presentations for members. Please contact Carol Zavitz (ext. 2238, czavitz@etfo.org) at the ETFO provincial office for details.

ANTI-HOMOPHOBIA AND HETEROSEXISM INITIATIVES GRANT

A maximum of \$300 per local for 20 locals is available to encourage anti-homophobia initiatives. Please contact Kathy Pigeon (kpigeon@etfo.org) at the ETFO provincial office for details.